

MASTERTENT®

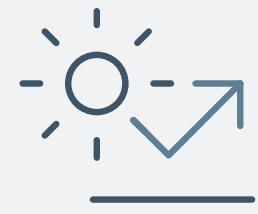
MASTERTENT

Heavy-Duty Professional Canopy Tents

# Construction & Industrial Canopy Tent Solutions



# Professional Level Quality Industry-Leading Canopy Tents



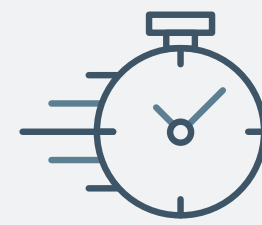
**UPF 50+ Fabrics**  
UPF 50+ outdoor fabrics for lasting sun and wind protection.



**Fire-Rated**  
Certified fire-rated fabrics for on-site safety.



**Manufacturer Direct**  
In-house design and construction for patented quality.



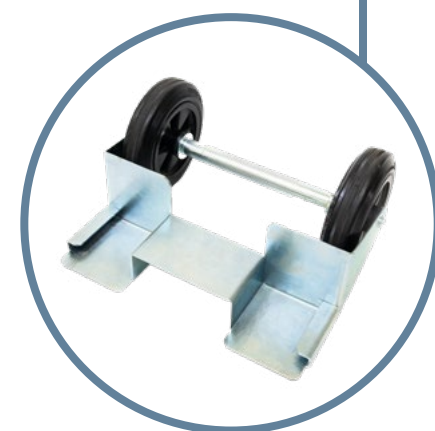
**Mobile Design**  
Folding setup and smooth setup finishes.



**High-Quality Colors & Print**  
Add logos and printing for on-site signage, branded groundbreaking events, and more.



**100% Waterproof Fabrics**  
Certified waterproof outdoor fabrics with advanced roof tensioning for water runoff.



**All-Aluminum Build**  
Extruded T-606 aluminum framework, including connectors commonly made from plastic.



**Robust Frame Design**  
Heavy-duty leg and truss profiles offer durability to rival semi-permanent structures while keeping the mobility of a pop-up tent.

*Average Recreational Pop-Up Tent*



**Mix-and-Match Sidewalls**  
Wrap your tent in your selection of walls: closed, doors, windows, and more with full-enclosure wall wrapping and custom fabrication options.







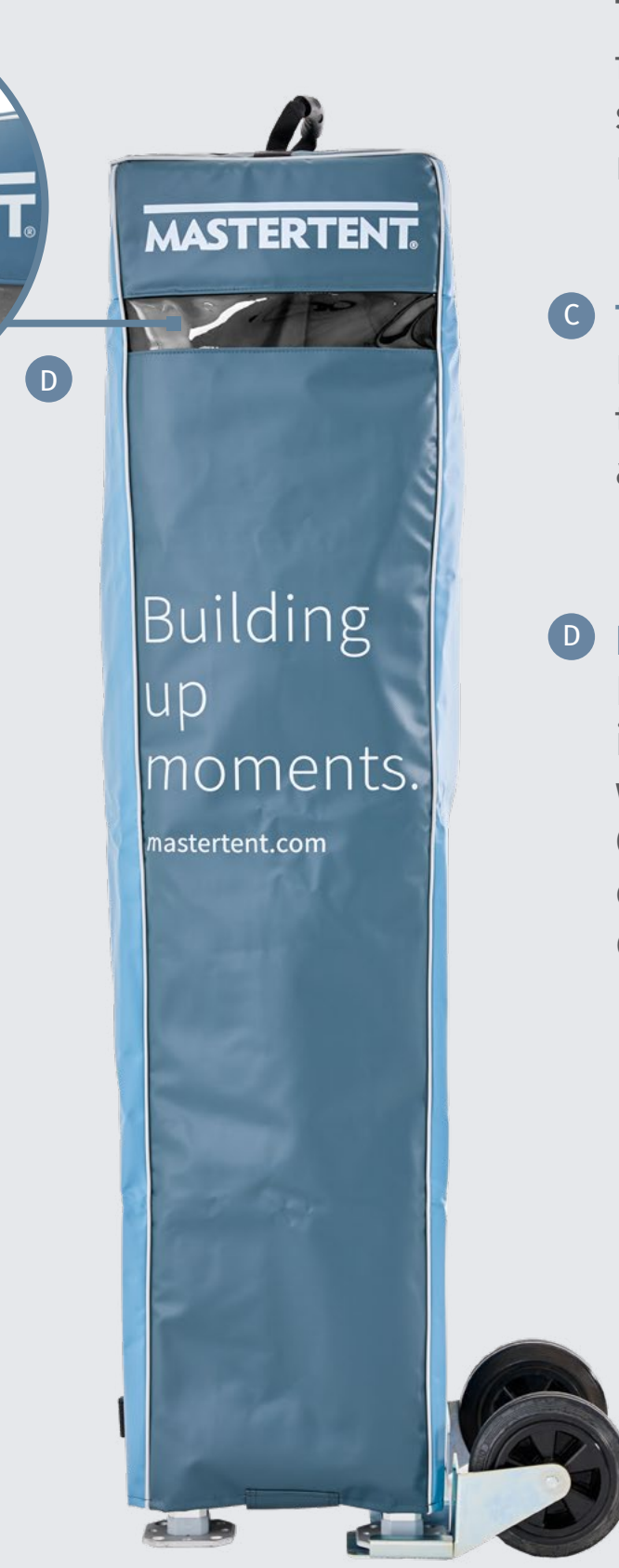


**A LED Lighting Systems**  
Streamlined lighting solutions that mount directly to the tent framework.

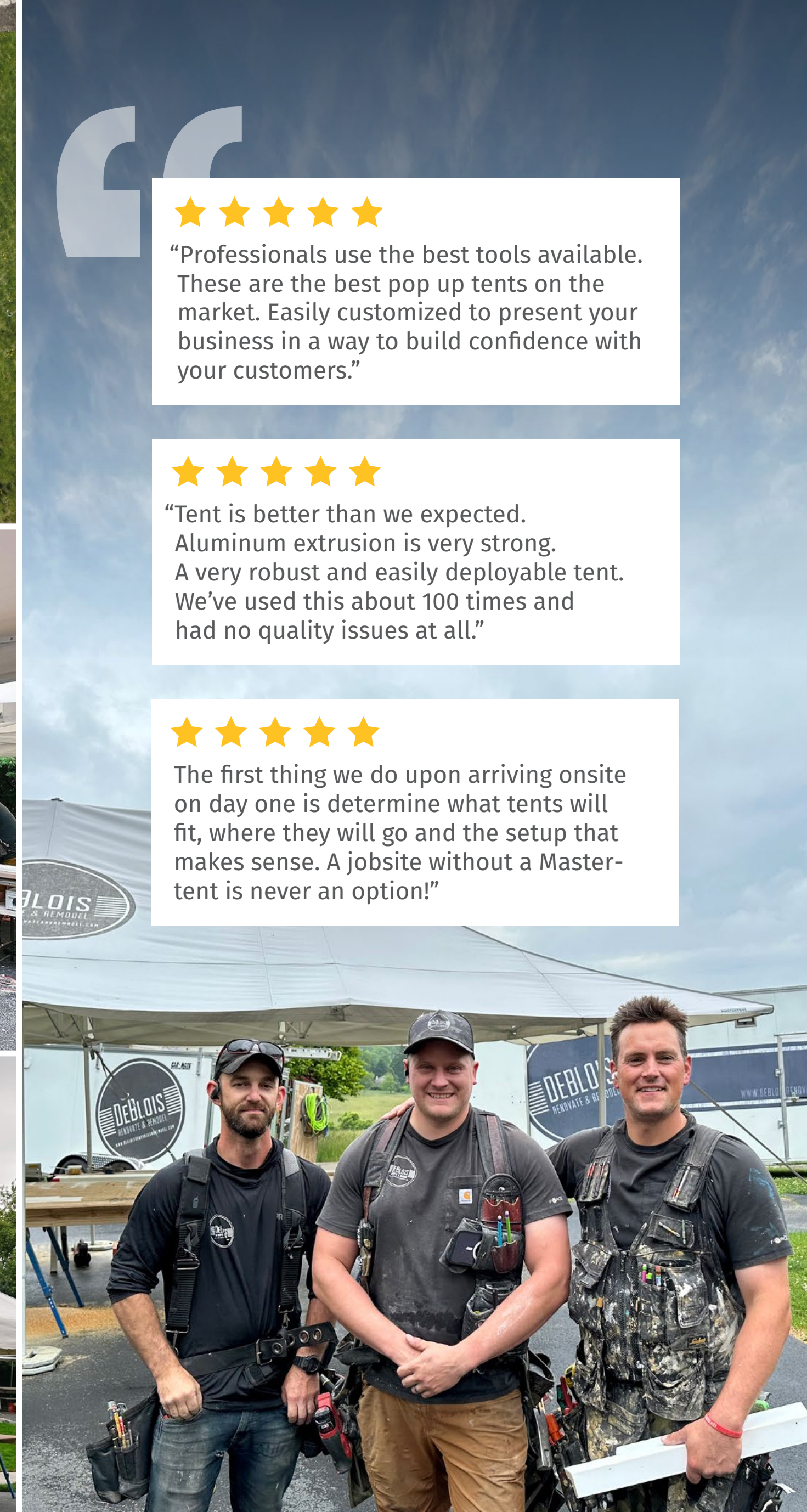
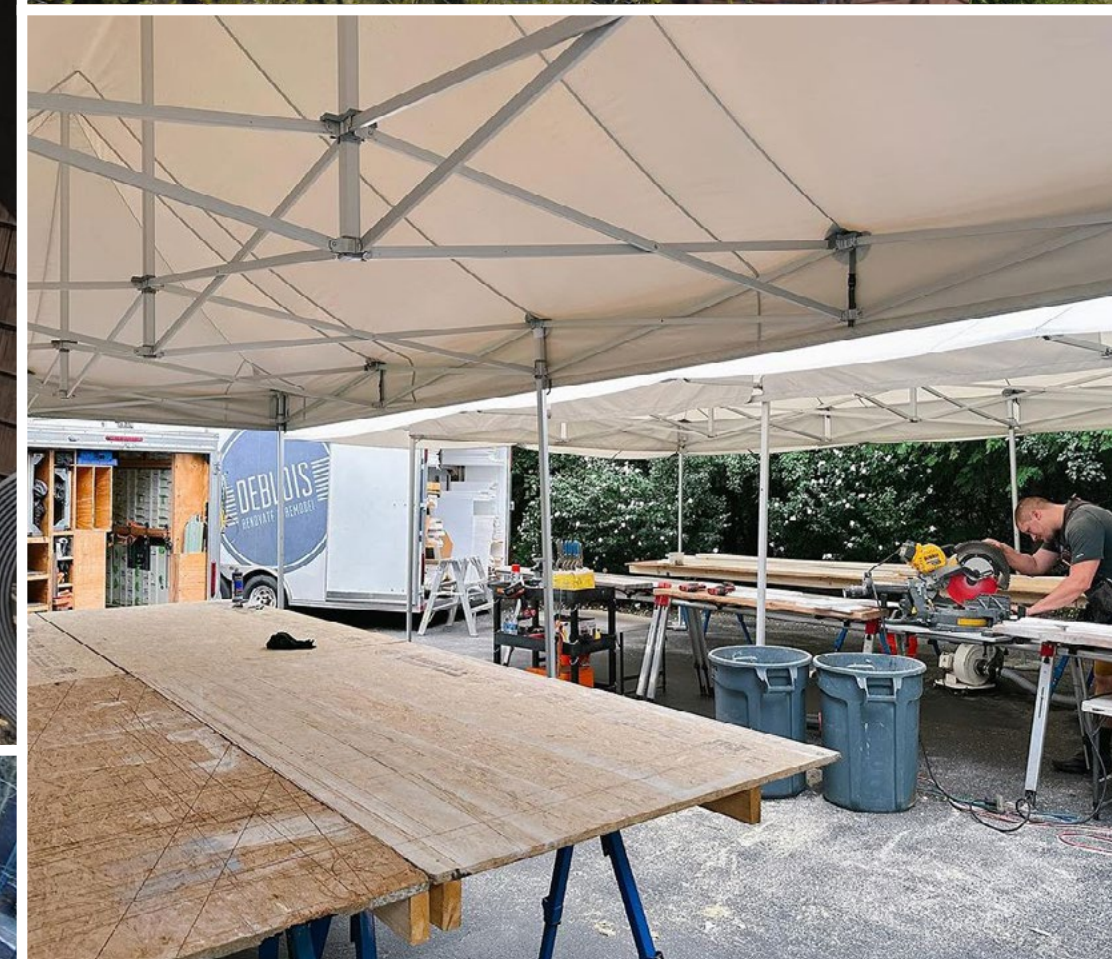
**B 100% Waterproof Fabrics**  
Tested and certified waterproof fabrics with over 2x the industry standard of performance. Advanced roof tensioning and sealed seams.

**C Tent Securing Options**  
Practice onsite safety with reliable tent securing: base weights, anchors, ballasts, and more.

**D Heavy-Duty PVC Transport Bag**  
Each Mastertent packs away in its PVC transport bag, equipped with a clear PVC preview window. Quickly indicate between tents or watch for unwanted moisture during storage.







★★★★★  
“Professionals use the best tools available. These are the best pop up tents on the market. Easily customized to present your business in a way to build confidence with your customers.”

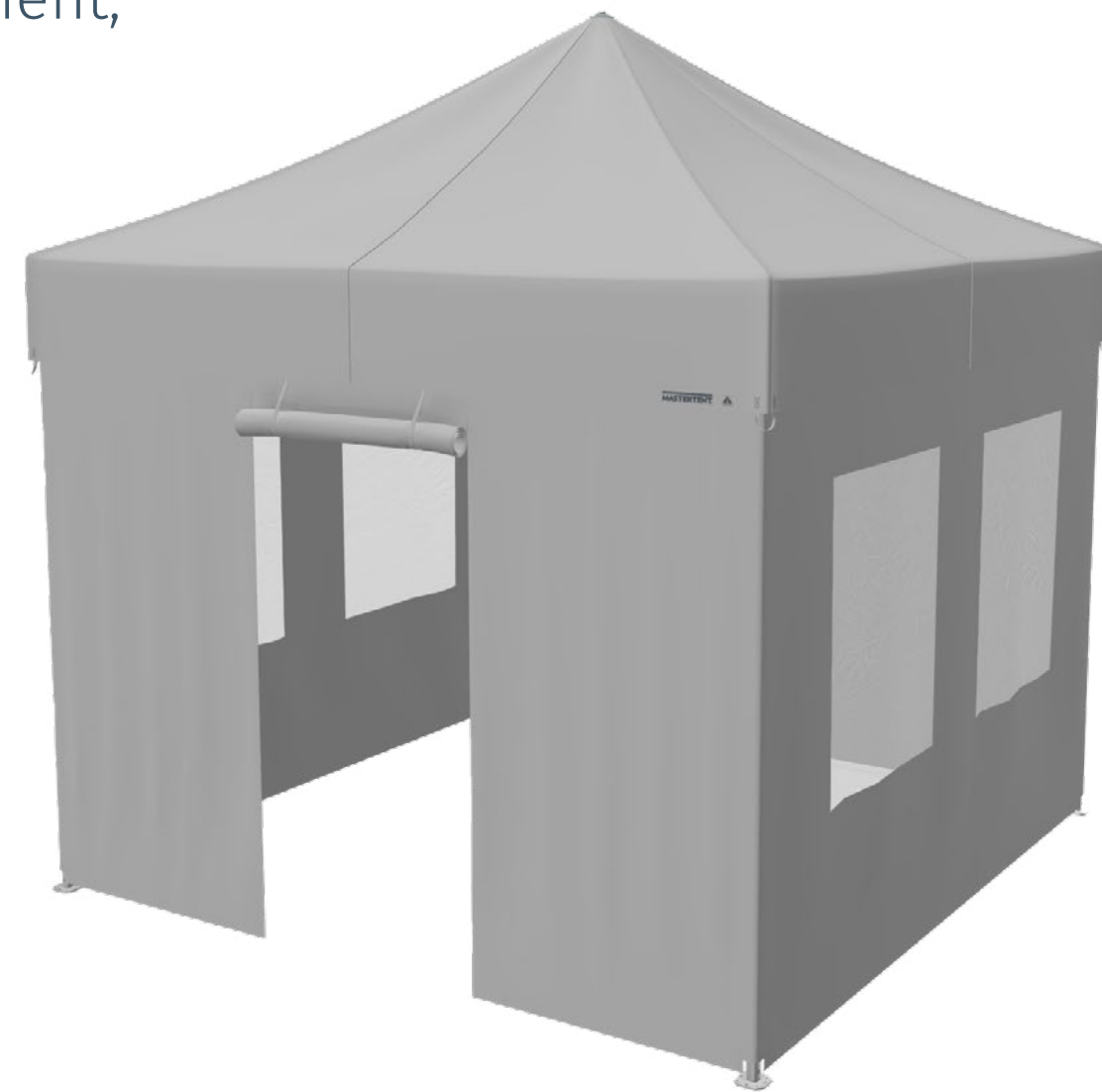
★★★★★  
“Tent is better than we expected. Aluminum extrusion is very strong. A very robust and easily deployable tent. We’ve used this about 100 times and had no quality issues at all.”

★★★★★  
The first thing we do upon arriving onsite on day one is determine what tents will fit, where they will go and the setup that makes sense. A jobsite without a Master-tent is never an option!”

# Design Your Canopy Tent

## 3D Design Center

Build your tent package with your choice of tent size, wall style and arrangement, color, printing and accessories.

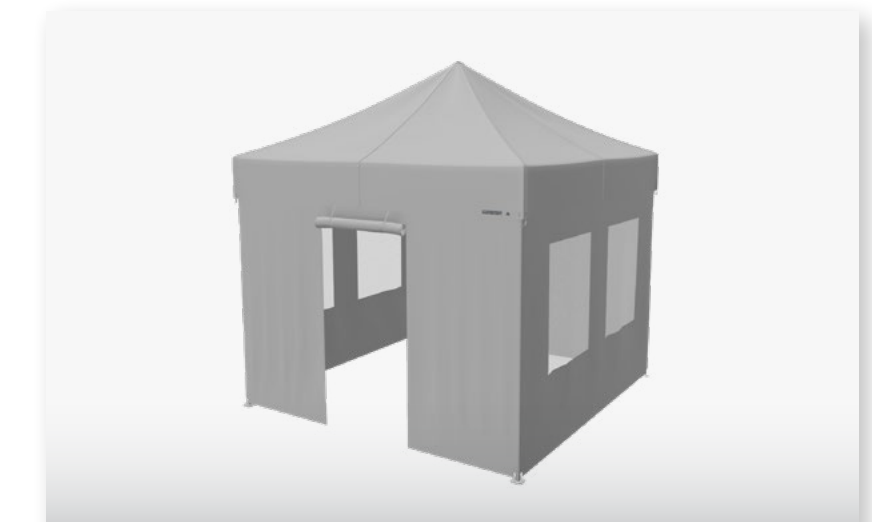


|         |        |
|---------|--------|
| 5x5     | 10x5   |
| 6.5x6.5 | 10x6.5 |
| 13x6.5  | 10x10  |
| 15x10   | 20x10  |
| 13x13   | 20x13  |
| 26x13   | 17x17  |



**Brand Promotion Tents**  
Sleek brand statement for your next tradeshow or groundbreaking.

[Design This Tent](#)



**Mobile Worksite Office**  
Flexible meeting spaces, first aid tents and staff zones.

[Design This Tent](#)



**Workspace Storage Tents**  
Keep machinery, vehicles and equipment secure and enclosed.

[Design This Tent](#)



**Worksite Shade Tents**  
Cover expansive areas for sun shelter with minimal setup time.

[Design This Tent](#)



### Preview Your Tent in Augmented Reality

Experience your tent design in real time with our integrated Augmented Reality Tool. After designing your tent package, use your mobile device to view your tent at scale in your environment.

**3D Design Center**

# Backed by Comprehensive Support

At Mastertent, we're more than just our products. Each tent comes with our full range of customer service, design, and program offerings for the ultimate tent experience.



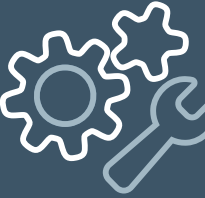
EU & US Supply and Operations  
Charlotte, NC US Headquarters



**Lifetime Customer Care**  
From ideation to event-day set up, rely on our Product Experts for any product, industry or use guidance



**In-House Graphics Support**  
Let our Graphic Designers bring your concepts to life with design mockups, print quality checks, and templates.



**Spare Parts Service**  
Our tents are designed to be worked on, not replaced. Repair individual parts vs. disposing of the entire tent.



**Ltd. Lifetime Warranties & ProCare**  
We back our tent frames with Ltd. Lifetime Warranty for any defects. Extend coverage to weather, accidents, and theft with our ProCare Program.



**Partner Programs**  
Become a Mastertent Partner and bring premium gear to your client base. Our Referral, Affiliate, and Reseller programs offer the right fit for any business.

## Get in touch.

**MASTERTENT USA**  
6965 Northpark Blvd, Suite N, Charlotte, NC 28216  
980-580-0920 · sales.usa@zingerle.group  
[www.mastertent.com](http://www.mastertent.com)



OUR BRANDS

