

MASTERTENT® **ECOTENT®** 

Professional Tent Series Comparison

Five Professional Tent Series

We build five models of professional-grade quality, offering flexible customization, durability and budget.



Master Tent S1

Industry-Leading All-Aluminum with Premium Features and Innovative Styles



Master Tent S2

Excellent All-Aluminum Build in a Classic Design



Ecotent E1

Super Tough All-Aluminum Construction with Upgraded Features



Ecotent E2

Tough and Capable, Ready-for-Action Structure

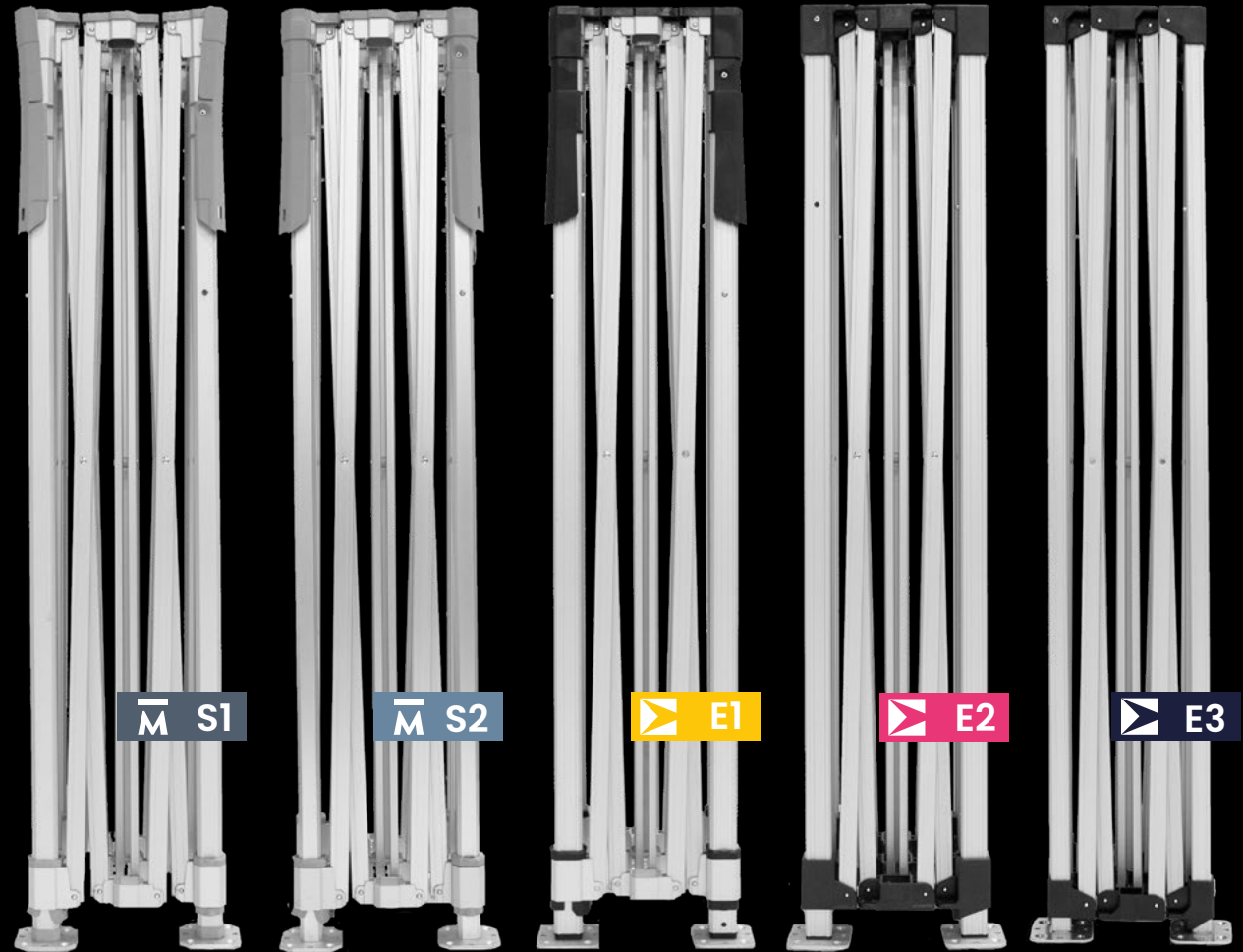


Ecotent E3

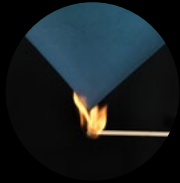
Great Pro-Starter in a Budget-Friendly Package

MASTERTENT

ECOTENT



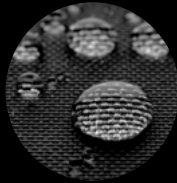
What makes a professional tent?



Certified Fire-Rated



Wind-Tunnel Tested



100% Waterproof



Aluminum vs Steel Build



Frame Strength & Durability

Robust aluminum frames with premium finishes.

Pro Features & Ease of Use

60-second setup, smart accessories, premium finishes.

Wind & Weather Performance

Crafted and tested for wind, sun, and rain performance.

Appearance & Customization

Endless customization, mix-and-match walls, colors and printing.

Measurements & Specs

Wide size ranges, compact pack size, and transport accessories.

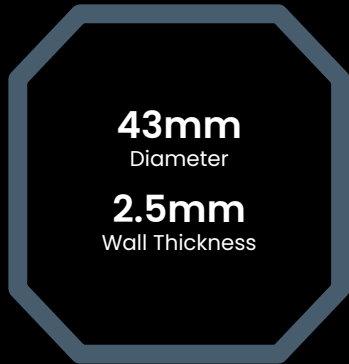


Attachable Wheel Kit

Pro Tent Construction

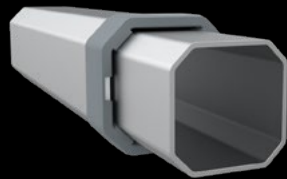
Five Professional Frame Models

M S1

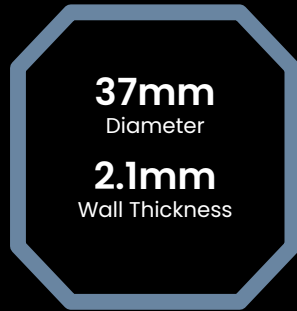


43mm
Diameter
2.5mm
Wall Thickness

10x10 • 15x10 • 20x10
13x13 • 20x13 • 26x13
13x6.5 • 17x17

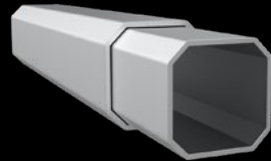


M S2



37mm
Diameter
2.1mm
Wall Thickness

10x10 • 15x10 • 20x10
5x5 • 10x5 • 6.5x6.5 • 10x6.5

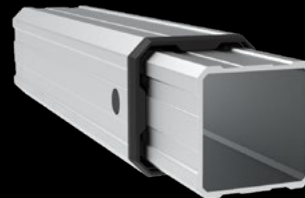


E1



46mm
Diameter
2.1mm
Wall Thickness

10x10 • 15x10 • 20x10
13x6.5 • 13x13 • 20x13 • 26x13

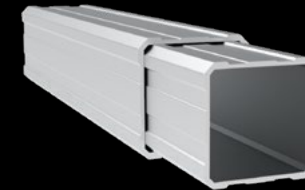


E2

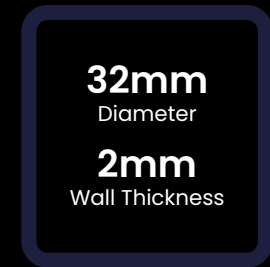


43mm
Diameter
2mm
Wall Thickness

10x10 • 15x10 • 20x10

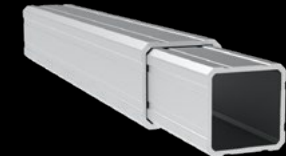


E3



32mm
Diameter
2mm
Wall Thickness

10x10 • 15x10 • 20x10
5x5 • 10x5 • 6.5x6.5 • 10x6.5



Series 1 | Professional Canopy Tents

MASTERTENT.



- A** Protective Rubber Cap
- B** Spring-Loaded Tensioning Bracket
- C** Roof Mounting J-Hook
- D** Aluminum Connecting Elements
- E** Smooth Set-Up Glider
- F** Heavy-Duty PVC Transport Bag

43mm
Diameter

2.5mm
Wall Thickness

Technical Details

Mastertent Series 1

Frame Material

All-Aluminum
Extruded T-606 Aircraft Grade

Frame Leg Construction

Octagonal Leg, 43mm Diameter
2.5mm Wall Thickness

Available Sizes

Popular	10x10, 15x10, 20x10
Large	13x6.5, 13x13, 20x13, 26x13, 17x17
Small	See Series 2 Tents

10x10 Tent Specs

Pack Size: 14 x 14 x 63"
Weight: 72lb (32.7kg)

Customization

Tent Roof Styles



Frame Height Adjustments

2-3 Adjustable Heights
Up to 36" Height Extensions

Powder Coated Frame Colors



Custom Fabrication

✓ Custom Walls & Tent Modifications on Request



Series 2 | Professional Canopy Tents

MASTERTENT.



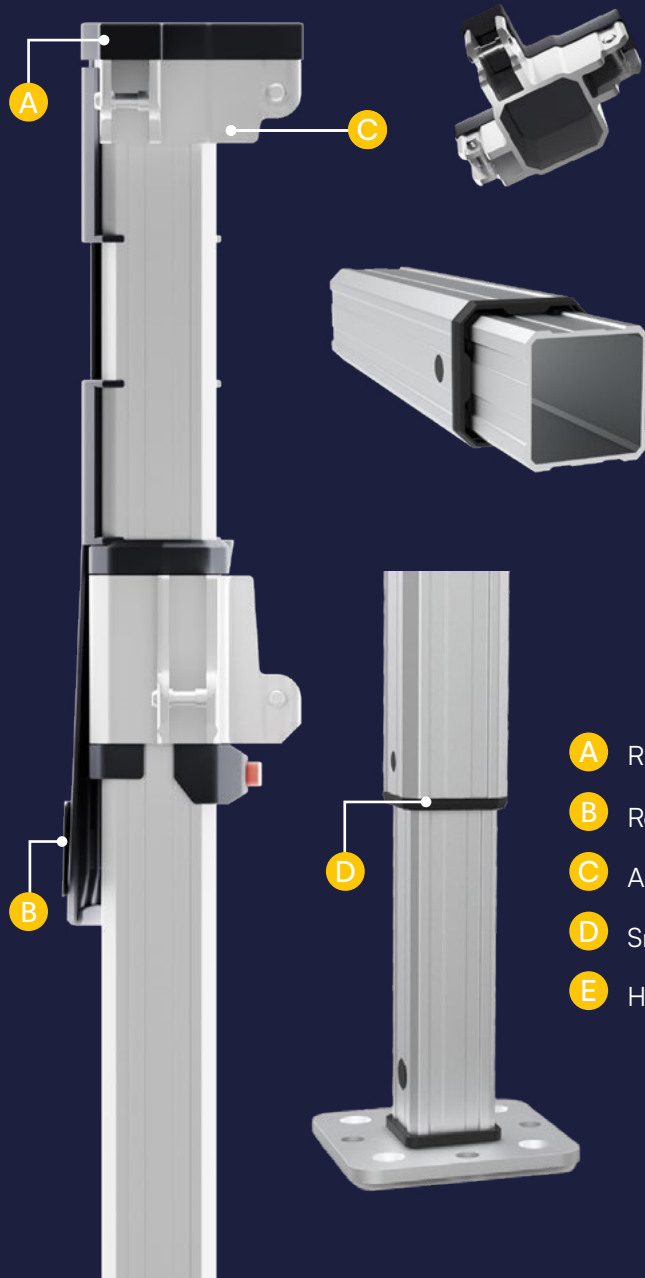
37mm
Diameter
2.1mm
Wall Thickness

- A** Rubber Protective Cap
- B** Tensioning Bracket
- C** Aluminum Connecting Elements
- D** Heavy-Duty PVC Transport Bag

Technical Details	Mastertent Series 1
Frame Material	All-Aluminum Extruded T-606 Aircraft Grade
Frame Leg Construction	Octagonal Leg, 37mm Diameter 2.1mm Wall Thickness
Available Sizes	Popular 10x10, 15x10, 20x10
	Large <i>See Series 1 Tents</i>
	Small 5x5, 10x5, 6.5x6.5, 10x6.5
10x10 Tent Specs	Pack Size: 14 x 14 x 63" Weight: 59lb (26.6kg)
Customization	
Tent Roof Styles	
Frame Height Adjustments	3 Adjustable Heights Up to 12" Height Extensions
Frame Color	
Custom Fabrication	✓ Custom Walls & Tent Modifications on Request

SERIES COMPARISON

E1



46mm
Diameter

2.1mm
Wall Thickness

- A** Rubber Protective Cap
- B** Roof Tensioning Bracket
- C** Aluminum Connecting Elements
- D** Smooth Set-Up Glider
- E** Heavy-Duty PVC Transport Bag



TECHNICAL DETAILS

E1*

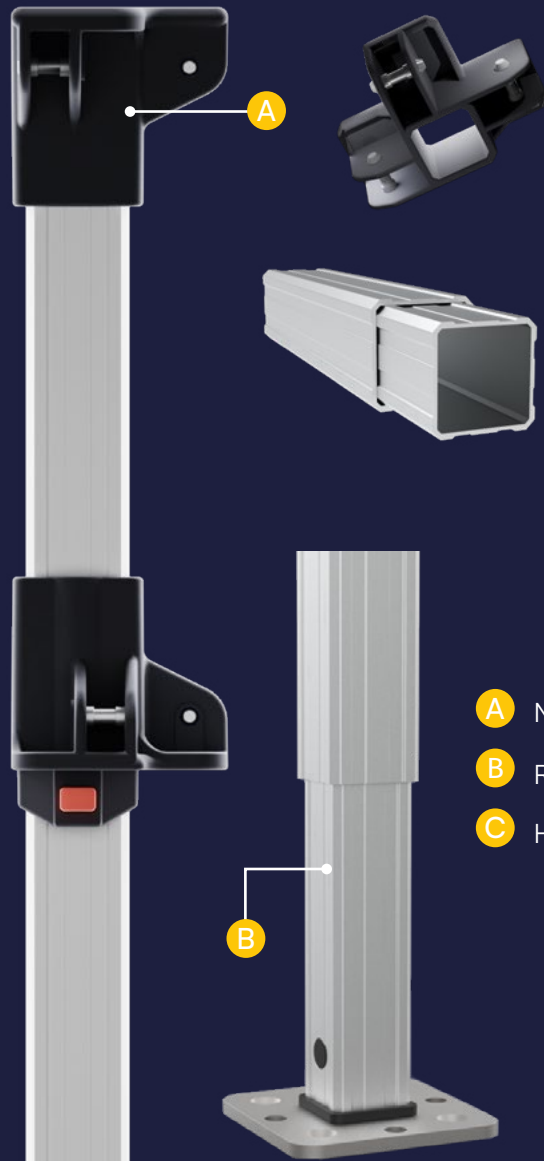
Frame Material	All-Aluminum, Extruded T-606 Aircraft Grade	
Frame Leg Construction	Ribbed Square Leg 46mm Diameter 2.1mm Wall Thickness	
Available Sizes	Popular	10x10, 15x10, 20x10
	Large	13x6.5, 13x13, 20x13, 26x13
	Small	See E3 Tents

CUSTOMIZATION

Tent Roof Styles	
10x10 Tent Specs	Pack Size: 14 x 14 x 63" Weight: 70.6lb (32.1kg)
Frame Height Adjustments	2-3 Adjustable Heights Up to 36" Height Ext.



E2



43mm
Diameter
2mm
Wall Thickness

- A** Nylon Connecting Elements
- B** Ribbed Aluminum Frame
- C** Heavy-Duty PVC Transport Bag



TECHNICAL DETAILS

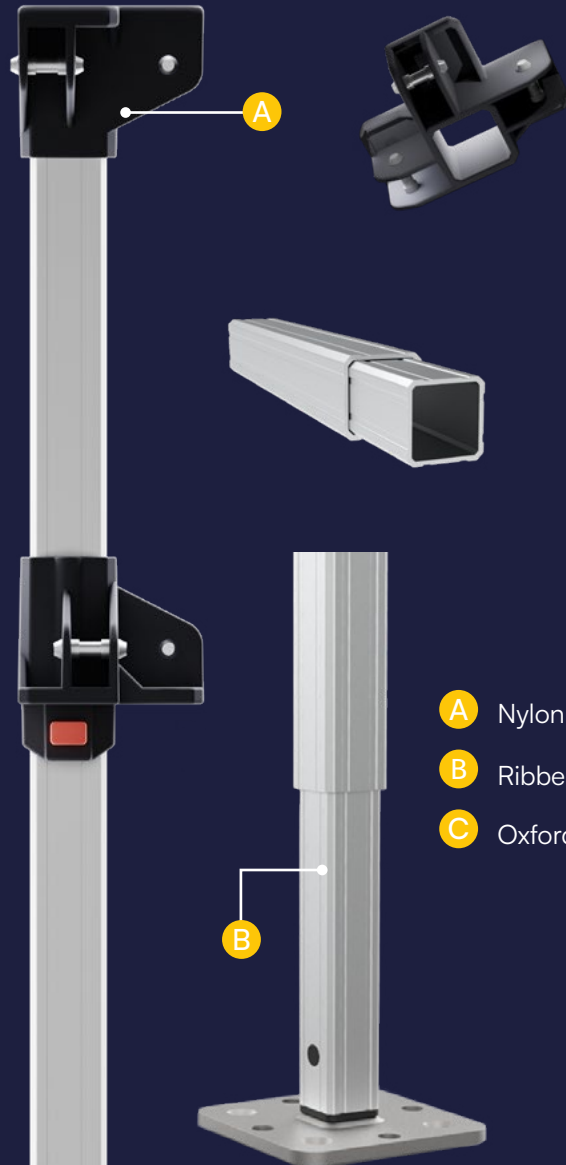
E2⁺

Frame Material	Aluminum & Nylon Extruded T-606 Aircraft Grade	
Frame Leg Construction	Octagonal Leg, 43mm Diameter 2mm Wall Thickness	
Available Sizes	Popular	10x10, 15x10, 20x10
	Large	See E1 Tents
	Small	See E3 Tents

CUSTOMIZATION

Tent Roof Styles	
10x10 Tent Specs	Pack Size: 14 x 14 x 63" Weight: 60.7lb (27.6kg)
Frame Height Adjustments	2 Adjustable Heights Up to 12" Height Ext.

E3



32mm
Diameter
2mm
Wall Thickness

C



- A** Nylon Connecting Elements
- B** Ribbed Aluminum Frame
- C** Oxford Poly Transport Bag

TECHNICAL DETAILS


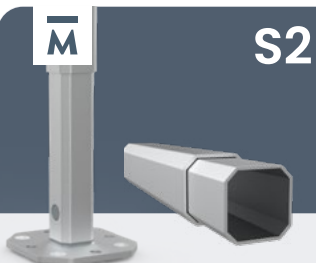



E3°

Frame Material	Aluminum & Nylon Extruded T-606 Aircraft Grade	
Frame Leg Construction	Ribbed Square Leg 32mm Diameter 2mm Wall Thickness	
Available Sizes	Popular	10x10, 15x10, 20x10
	Large	See E1 Tents
	Small	5x5, 10x5, 6.5x6.5, 10x6.5

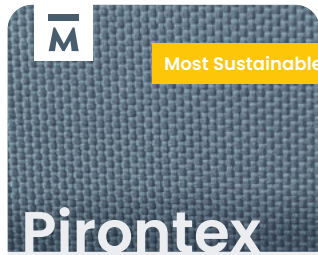
CUSTOMIZATION

Tent Roof Styles	
10x10 Tent Specs	Pack Size: 14 x 14 x 63" Weight: 50.2lb (22.8kg)
Frame Height Adjustments	1 Height Setting

Series Overview

S1	S2	E1	E2	E3
 <p>100% Customizable</p>				
<p>Core & Large Tent Sizes</p>	<p>Core & Small Tent Sizes</p>	<p>Core & Large Tent Sizes</p>	<p>Core Tent Sizes</p>	<p>Core & Small Tent Sizes</p>
<p>43mm Leg Profile Diameter</p>	<p>37mm Leg Profile Diameter</p>	<p>46mm Leg Profile Diameter</p>	<p>43mm Leg Profile Diameter</p>	<p>32mm Leg Profile Diameter</p>
<p>All-Aluminum 2.5mm Frame Thickness □ Octagonal Leg</p>	<p>All-Aluminum 2.1mm Frame Thickness □ Octagonal Leg</p>	<p>All-Aluminum 2.1mm Frame Thickness □ Ribbed Square Leg</p>	<p>Aluminum & Nylon 2mm Frame Thickness □ Ribbed Square Leg</p>	<p>Aluminum & Nylon 2mm Frame Thickness □ Ribbed Square Leg</p>
<p>✓ Spring-Loaded Roof Corner Tensioners</p>	<p>✓ Fixed-Position Roof Corner Tensioners</p>	<p>✓ Fixed-Position Roof Corner Tensioners</p>	<p>✗ Direct-to-Frame Mounting</p>	<p>✗ Direct-to-Frame Mounting</p>
<p>2-3 Adjustable Height Levels ✓ 1-36" Height Extensions</p>	<p>3 Adjustable Height Levels ✓ 1-12" Height Extensions</p>	<p>2-3 Adjustable Height Levels ✓ 1-36" Height Extensions</p>	<p>2 Adjustable Height Levels ✓ 1-12" Height Extensions</p>	<p>1 Height Level ✗ No Height Extensions</p>
<p>5 Signature Roof Styles</p>	<p>Classic Tent Roof</p>	<p>Classic Tent Roof</p>	<p>Classic Tent Roof</p>	<p>Classic Tent Roof</p>
<p>Custom Frame Colors</p>	<p>Anodized Aluminum Frame</p>	<p>Anodized Aluminum Frame</p>	<p>Anodized Aluminum Frame</p>	<p>Anodized Aluminum Frame</p>
<p>✓ Custom Fabrication Requests</p>	<p>✓ Custom Fabrication Requests</p>	<p>✓ Custom Fabrication Requests</p>	<p>✓ Fabrication Requests for Volume Buyers</p>	<p>✓ Fabrication Requests for Volume Buyers</p>

Fabrics Overview



600 Denier

Double-Weave Polyester
1,500D PE

330% Waterproof
5,000mm Water Column

UPF 50+
Color Fastness
Blue Scale 7-8/8



Fire-Retardant

NFPA 701, CPAI-84 Sec.6,
EN 13501-1:2019,
CAN/ULC-S109 1237



Matte Fabric Finish

Most Sustainable



Oxford 500D

500 Denier

Double Weave Polyester
1,000D PE

150% Waterproof
2,000mm Water Column

UPF 50+
Color Fastness
Blue Scale 4.5-6.5/8



Fire-Retardant

NFPA 701, CPAI-84 Sec.6,
EN 13501-1:2019,
CAN/ULC-S109 1237



Glossy Fabric Finish



Oxford 250D

250 Denier

Double Weave Polyester
500D PE

100% Waterproof
1,600mm Water Column

UPF 50+
Color Fastness
Blue Scale 4.5-6.5/8



Fire-Retardant

Fire-retardant and non-
fire retardant options
available.



Glossy Fabric Finish



Average Rec

300 Denier

Single Layer Polyester
300D PE

X Water Resistant
<1,500mm Water Column

UPF 50+
Color Fastness
Blue Scale 3.5-5.5/8



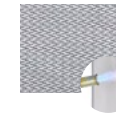
Fire-Resistant

Treated for fire-resistant
certifications or non-fire
treated options.

Varied Colors
& Finishes

Specialty Fabrics

- Heavy-Duty PVC
- Waterproof PVC material for heavy-duty use tent fabrics.



Refractory Fiberglass
Fiberglass 'fireproof' material for extremely high temperatures.



Recycled Fabric
Eco line made from 100% recycled PET plastics.

Tent Fabric Glossary

Denier: Thickness and weight of a fabric's fibers and threads. Mass in grams of 9,000m of a fiber.

Water Column: A hydrostatic pressure test to measure the amount of water pressure a fabric can withstand before water penetrates through.

UPF: Ultraviolet Protection Factor: A fabric's effectiveness in blocking ultraviolet radiation.

PE: Performance Equivalent: Real world performance calculation of denier in oxford, double-weave fabric construction.

Blue Scale: Method for measuring lightfastness of textiles, the permanence of color agents, and effects of light exposure. Scale of 1-8 with 8 being the most resistant to fading.



Technical Details

Pirontex®

Oxford 500D

Yarn Count

600D Double-Spun Weave

500D Oxford Weave (Functional 1,000D)

Weight

255 g/m²

220 g/m²

Elongation (EN 53360)

6% Permanent Elongation

9.4% Permanent Elongation

Bending Strength
(DIN EN ISO 32100)

without UV exposure:
cracking after 100,000 folds

without UV exposure:
cracking after 20,000 folds

with UV exposure:
cracking after 31,500 folds

with UV exposure:
cracking after 8,000 folds

Waterproof Rating (DIN EN 20811)

5,000mm Water Column

1,600mm Water Column

Color Fade Resistance
(DIN EN ISO 105-B02)

Dyed Thread

Dyed Fabric

Bluescale: 7-8 (of max. 8)

Bluescale: 4.5-6.5 (of max. 8)

(DIN EN ISO 105-A02)

Greyscale: 4.5 (of max. 5)

Greyscale: 3.5 (out of max. 5)

Coating

Nano Coating:
Water, Oil and Dirt Repellent

Water Repellent

Fire Rating Class
(NFPA 701, DIN EN 13501-1: 2018)

B - s1, d0 (difficult to ignite)

B - s1, d0 (difficult to ignite)



50% Less Energy
Consumption*



60% Less CO2
Emission*



80% Less Water
Consumption*

*Pirontex production stats compared to standard textile production.

Pack Size & Transport Specs

MASTERTENT.

Size	Series 1	Series 2
5x5ft	—	35.2lb (16kg)
10x5ft	—	44.7lb (20.3kg)
6.5x6.5ft	—	49.3lb (22.4kg)
10x6.5ft	—	61.8lb (28.1kg)
10x10ft	72lb (32.7kg)	59lb (26.6kg)
15x10ft	92.4lb (42kg)	75.5lb (34.3kg)
20x10ft	123.6lb (56.2kg)	102.5lbs. (46.6kg)
13x6.5ft	66.9lb (30.4kg)	—
13x13ft	90.9lb (41.3kg)	—
20x13ft	117.5lb (53.4kg)	—
26x13ft	156.9lb (71.3kg)	—
17x17ft	152.7lb (69.4kg)	—

x10 TENTS
63" H



M S1

M S2

ECOTENT CANOPY TENTS

TENT SPECS

SIZE	E1*	E2*	E3°
5x5ft	—	—	35.9lb (16.3kg)
10x5ft	—	—	44.2lb (20.1kg)
6.5x6.5ft	—	—	51.3lb (23.3kg)
10x6.5ft	—	—	64lb (29.1kg)
10x10ft	70.6lb (32.1kg)	60.7lb (27.6kg)	50.2lb (22.8kg)
15x10ft	91lb (41.4kg)	79lb (35.9kg)	65.8lb (29.9kg)
20x10ft	121.9lb (55.4kg)	108.5lb (49.3kg)	88.4lb (40.2kg)
13x6.5ft	62.3lb (28.3kg)	—	—
13x13ft	88.2lb (40.2kg)	—	—
20x13ft	115.7lb (52.6kg)	—	—
26x13ft	155lb (70.5kg)	—	—

ECOTENT. 



Which tent is right for me?

Explore more from our two professional canopy tent brands: Mastertent and Ecotent. Every brand and tent is backed with our quality and customer service guarantees.



MASTERTENT.

Bespoke customization with sleek, sophisticated premium quality. Complementary 1-Year Pro Care Coverage.

[Explore Mastertent](#)



ECOTENT.

Ready-to-go, rugged tough tents with aluminum builds. Featuring introductory commercial quality models.

[Explore Ecotent](#)

Lean on your Product Expert!

We're here to help with any questions, custom requests, and more.



sales.usa@zingerle.group • 704.312.1600
mastertent.com | ecotent.us