

Building up moments.

**MASTERTENT®**

Technical Data Sheets

# Canopy Tents

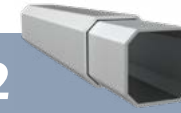


# 5x5ft



## Frame Specifications

**S2**



### Frame Construction

<b>Frame Material</b>	2x Strong, All-Aluminum (T606)
<b>Leg Shape &amp; Profile</b>	Octagonal Leg, 37mm (2.1mm)
<b>Truss Profile</b>	28.5x15mm (2mm)
<b>Connecting Elements</b>	✓ Aluminum with Rubber Caps
<b>Push-Button Locks</b>	✓ Comfort Press
<b>Corner Brackets</b>	✓ Fixed Position & Corner Clips

### Weight

35.2lbs. (16kg)

### Transport Bag

Heavy-Duty PVC with Window

## Customization Options

### Roof Styles



### Frame Colors



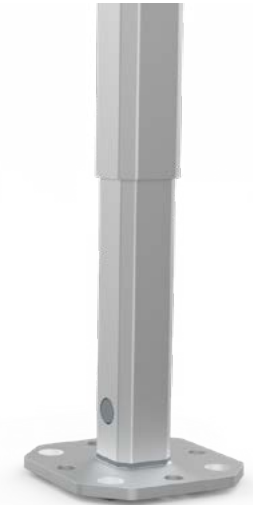
Anodized Aluminum

### Frame Height Extensions

✓ Up to 12"

### Peak Flag Capable

✓ Frame & Roof Integrated



Our professional-grade tents can mix and match frame and fabric quality, roof styles, colors, customizations, and more.

**Rely on your Product Expert or visit our quick links:**

[Mastertent Website](#)

[3D Tent Configurator](#)

[Tent Sizes](#)

[Photo Gallery](#)

[Construction Details](#)

[Warranties & Certificates](#)



### Custom Printing

Individual Logo or Full Surface



### Roof Fabric Options

Pirontex®, Oxford Weave 500D Polyester, Heavy-Duty PVC, Fiberglass, Loden

## Textile Properties

### Pirontex®

### Oxford 500D

### Waterproof Rating

✓ 5x Industry Avg  
5,000mm Water Column

✓ 2x Industry Avg  
1,600mm Water Column

### Fire Rating Class

NFPA 701, CPAI-84 Sec.6, EN 13501-1:2019, CAN/ULC-S109, CA Title 19 Sec. 1237

### Color Fade Resistance

Extreme  
(blue scale 7.0-8.0 of 8.0)

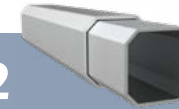
Durable  
(blue scale 4.5-6.5 of 8.0)

# 6.5x6.5ft



## Frame Specifications

**S2**



### Frame Construction

<b>Frame Material</b>	2x Strong, All-Aluminum (T606)
<b>Leg Shape &amp; Profile</b>	Octagonal Leg, 37mm (2.1mm)
<b>Truss Profile</b>	28.5x15mm (2mm)
<b>Connecting Elements</b>	✓ Aluminum with Rubber Caps
<b>Push-Button Locks</b>	✓ Comfort Press
<b>Corner Brackets</b>	✓ Fixed Position & Corner Clips

### Weight

49.3lbs. (22.4kg)

### Transport Bag

Heavy-Duty PVC with Window

## Customization Options

### Roof Styles



### Frame Colors



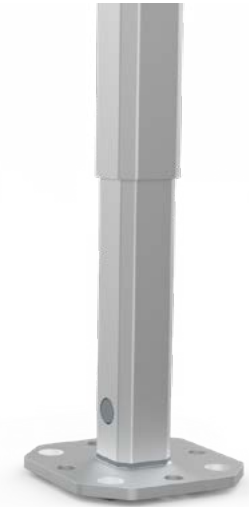
Anodized Aluminum

### Frame Height Extensions

✓ Up to 12"

### Peak Flag Capable

✓ Frame & Roof Integrated



Our professional-grade tents can mix and match frame and fabric quality, roof styles, colors, customizations, and more.

**Rely on your Product Expert or visit our quick links:**

[Mastertent Website](#)

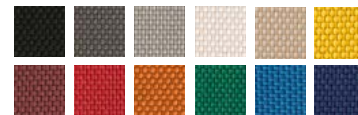
[3D Tent Configurator](#)

[Tent Sizes](#)

[Photo Gallery](#)

[Construction Details](#)

[Warranties & Certificates](#)



### Custom Printing

Individual Logo or Full Surface



### Roof Fabric Options

Pirontex®, Oxford Weave 500D Polyester, Heavy-Duty PVC, Fiberglass, Loden

## Textile Properties

### Pirontex®

### Oxford 500D

### Waterproof Rating

✓ 5x Industry Avg  
5,000mm Water Column

✓ 2x Industry Avg  
1,600mm Water Column

### Fire Rating Class

NFPA 701, CPAI-84 Sec.6, EN 13501-1:2019, CAN/ULC-S109, CA Title 19 Sec. 1237

### Color Fade Resistance

Extreme  
(blue scale 7.0-8.0 of 8.0)

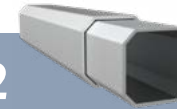
Durable  
(blue scale 4.5-6.5 of 8.0)

# 10x5ft



## Frame Specifications

**S2**



### Frame Construction

<b>Frame Material</b>	2x Strong, All-Aluminum (T606)
<b>Leg Shape &amp; Profile</b>	Octagonal Leg, 37mm (2.1mm)
<b>Truss Profile</b>	28.5x15mm (2mm)
<b>Connecting Elements</b>	✓ Aluminum with Rubber Caps
<b>Push-Button Locks</b>	✓ Comfort Press
<b>Corner Brackets</b>	✓ Fixed Position & Corner Clips

### Weight

44.7lbs. (20.3kg)

### Transport Bag

Heavy-Duty PVC with Window

## Customization Options

### Roof Styles



### Frame Colors



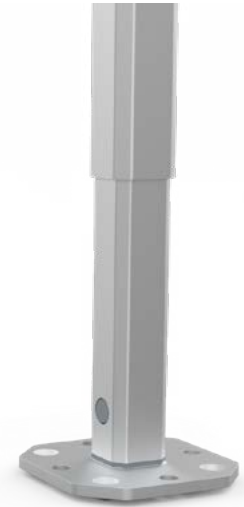
Anodized Aluminum

### Frame Height Extensions

✓ Up to 12"

### Peak Flag Capable

✓ Frame & Roof Integrated



Our professional-grade tents can mix and match frame and fabric quality, roof styles, colors, customizations, and more.

**Rely on your Product Expert or visit our quick links:**

[Mastertent Website](#)

[3D Tent Configurator](#)

[Tent Sizes](#)

[Photo Gallery](#)

[Construction Details](#)

[Warranties & Certificates](#)



### Custom Printing

Individual Logo or Full Surface



### Roof Fabric Options

Pirontex®, Oxford Weave 500D Polyester, Heavy-Duty PVC, Fiberglass, Loden

## Textile Properties

### Pirontex®

### Oxford 500D

### Waterproof Rating

✓ 5x Industry Avg  
5,000mm Water Column

✓ 2x Industry Avg  
1,600mm Water Column

### Fire Rating Class

NFPA 701, CPAI-84 Sec.6, EN 13501-1:2019, CAN/ULC-S109, CA Title 19 Sec. 1237

### Color Fade Resistance

Extreme  
(blue scale 7.0-8.0 of 8.0)

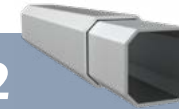
Durable  
(blue scale 4.5-6.5 of 8.0)

# 10x6.5ft



## Frame Specifications

### S2



### Frame Construction

<b>Frame Material</b>	2x Strong, All-Aluminum (T606)
<b>Leg Shape &amp; Profile</b>	Octagonal Leg, 37mm (2.1mm)
<b>Truss Profile</b>	28.5x15mm (2mm)
<b>Connecting Elements</b>	✓ Aluminum with Rubber Caps
<b>Push-Button Locks</b>	✓ Comfort Press
<b>Corner Brackets</b>	✓ Fixed Position & Corner Clips

### Weight

61.8lbs. (28.1kg)

### Transport Bag

Heavy-Duty PVC with Window

## Customization Options

### Roof Styles



### Frame Colors



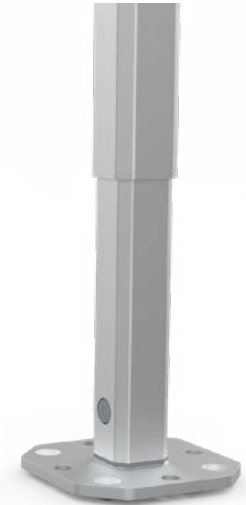
Anodized Aluminum

### Frame Height Extensions

✓ Up to 12"

### Peak Flag Capable

✓ Frame & Roof Integrated



Our professional-grade tents can mix and match frame and fabric quality, roof styles, colors, customizations, and more.

**Rely on your Product Expert or visit our quick links:**

[Mastertent Website](#)

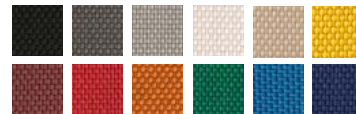
[3D Tent Configurator](#)

[Tent Sizes](#)

[Photo Gallery](#)

[Construction Details](#)

[Warranties & Certificates](#)



### Custom Printing

Individual Logo or Full Surface



### Roof Fabric Options

Pirontex®, Oxford Weave 500D Polyester, Heavy-Duty PVC, Fiberglass, Loden

## Textile Properties

### Pirontex®

### Oxford 500D

### Waterproof Rating

✓ 5x Industry Avg  
5,000mm Water Column

✓ 2x Industry Avg  
1,600mm Water Column

### Fire Rating Class

NFPA 701, CPAI-84 Sec.6, EN 13501-1:2019, CAN/ULC-S109, CA Title 19 Sec. 1237

### Color Fade Resistance

Extreme  
(blue scale 7.0-8.0 of 8.0)

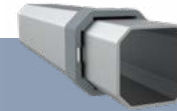
Durable  
(blue scale 4.5-6.5 of 8.0)

# 13x6.5ft



## Frame Specifications

**S1**



### Frame Construction

<b>Frame Material</b>	3x Strong, All-Aluminum (T606)
<b>Leg Shape &amp; Profile</b>	Octagonal Leg, 43mm (2.5mm)
<b>Truss Profile</b>	30x15mm (2.8mm)
<b>Connecting Elements</b>	✓ Aluminum with Rubber Caps
<b>Push-Button Locks</b>	✓ Comfort Press
<b>Corner Brackets</b>	✓ Spring Tension & Corner Clips

### Weight

66.9lbs. (30.4kg)

### Transport Bag

Heavy-Duty PVC with Window

## Customization Options

### Roof Styles



### Frame Colors

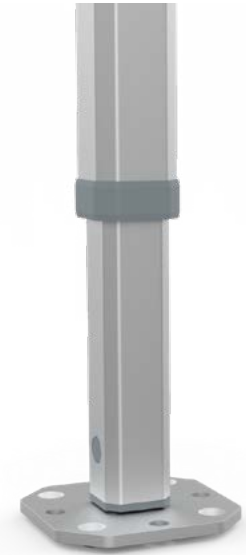


### Frame Height Extensions

✓ Up to 36"

### Peak Flag Capable

✓ Frame & Roof Integrated



Our professional-grade tents can mix and match frame and fabric quality, roof styles, colors, customizations, and more.

**Rely on your Product Expert or visit our quick links:**

[Mastertent Website](#)

[3D Tent Configurator](#)

[Tent Sizes](#)

[Photo Gallery](#)

[Construction Details](#)

[Warranties & Certificates](#)



### Custom Printing

Individual Logo or Full Surface



### Roof Fabric Options

Pirontex®, Oxford Weave 500D Polyester, Heavy-Duty PVC, Fiberglass, Loden

## Textile Properties

### Pirontex®

### Oxford 500D

### Waterproof Rating

✓ 5x Industry Avg  
5,000mm Water Column

✓ 2x Industry Avg  
1,600mm Water Column

### Fire Rating Class

NFPA 701, CPAI-84 Sec.6, EN 13501-1:2019, CAN/ULC-S109, CA Title 19 Sec. 1237

### Color Fade Resistance

Extreme  
(blue scale 7.0-8.0 of 8.0)

Durable  
(blue scale 4.5-6.5 of 8.0)

# 10x10ft



Overall Peak Height  
10' 9" (327cm)

Entrance Height  
6' 7" (201cm)

Pack Size (L x W x H)  
14 x 14 x 63"

Our professional-grade tents can mix and match frame and fabric quality, roof styles, colors, customizations, and more.

**Rely on your Product Expert or visit our quick links:**

[Mastertent Website](#)

[3D Tent Configurator](#)

[Tent Sizes](#)

[Photo Gallery](#)

[Construction Details](#)

[Warranties & Certificates](#)

## Frame Specifications

### Frame Construction

**Frame Material**  
**Leg Shape & Profile**  
**Truss Profile**  
**Connecting Elements**  
**Push-Button Locks**  
**Corner Brackets**

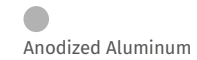
	S1 	S2 
<b>Frame Material</b>	3x Strong, All-Aluminum (T606)	2x Strong, All-Aluminum (T606)
<b>Leg Shape &amp; Profile</b>	Octagonal Leg, 43mm (2.5mm)	Octagonal Leg, 37mm (2.1mm)
<b>Truss Profile</b>	30x15mm (2.8mm)	28.5x15mm (2mm)
<b>Connecting Elements</b>	✓ Aluminum with Rubber Caps	✓ Aluminum with Rubber Caps
<b>Push-Button Locks</b>	✓ Comfort Press	✓ Comfort Press
<b>Corner Brackets</b>	✓ Spring Tension & Corner Clips	✓ Fixed Position & Corner Clips
<b>Weight</b>	72lbs. (32.7kg)	59lbs. (26.6kg)
<b>Transport Bag</b>	Heavy-Duty PVC with Window	Heavy-Duty PVC with Window

## Customization Options

### Roof Styles



### Frame Colors



### Frame Height Extensions

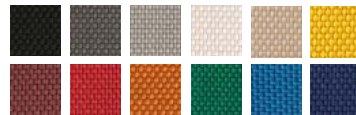
✓ Up to 36"

✓ Up to 12"

### Peak Flag Capable

✓ Frame & Roof Integrated

✓ Frame & Roof Integrated



## Custom Printing

Individual Logo or Full Surface 

## Roof Fabric Options

Pirontex®, Oxford Weave 500D Polyester,  
Heavy-Duty PVC, Fiberglass, Loden

## Textile Properties

### Waterproof Rating

## Pirontex®

✓ 5x Industry Avg  
5,000mm Water Column

## Oxford 500D

✓ 2x Industry Avg  
1,600mm Water Column

### Fire Rating Class

NFPA 701, CPAI-84 Sec.6, EN 13501-1:2019,  
CAN/ULC-S109, CA Title 19 Sec. 1237

### Color Fade Resistance

Extreme  
(blue scale 7.0-8.0 of 8.0)

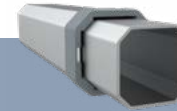
Durable  
(blue scale 4.5-6.5 of 8.0)

# 10x10ft Square



## Frame Specifications

**S1**



### Frame Construction

<b>Frame Material</b>	3x Strong, All-Aluminum (T606)
<b>Leg Shape &amp; Profile</b>	Octagonal Leg, 43mm (2.5mm)
<b>Truss Profile</b>	30x15mm (2.8mm)
<b>Connecting Elements</b>	✓ Aluminum with Rubber Caps
<b>Push-Button Locks</b>	✓ Comfort Press
<b>Corner Brackets</b>	✓ Spring Tension & Corner Clips

### Weight

88.2lbs. (40.1kg)

### Transport Bag

Heavy-Duty PVC with Window

## Customization Options

### Roof Styles



### Frame Colors

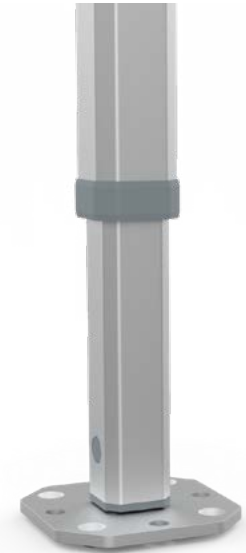


### Frame Height Extensions

✓ Up to 36"

### Peak Flag Capable

✓ Frame & Roof Integrated



Our professional-grade tents can mix and match frame and fabric quality, roof styles, colors, customizations, and more.

**Rely on your Product Expert or visit our quick links:**

[Mastertent Website](#)

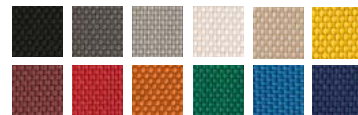
[3D Tent Configurator](#)

[Tent Sizes](#)

[Photo Gallery](#)

[Construction Details](#)

[Warranties & Certificates](#)



### Custom Printing

Individual Logo or Full Surface



### Roof Fabric Options

Pirontex®, Oxford Weave 500D Polyester, Heavy-Duty PVC, Fiberglass, Loden

## Textile Properties

### Pirontex®

### Oxford 500D

### Waterproof Rating

✓ 5x Industry Avg  
5,000mm Water Column

✓ 2x Industry Avg  
1,600mm Water Column

### Fire Rating Class

NFPA 701, CPAI-84 Sec.6, EN 13501-1:2019, CAN/ULC-S109, CA Title 19 Sec. 1237

### Color Fade Resistance

Extreme  
(blue scale 7.0-8.0 of 8.0)

Durable  
(blue scale 4.5-6.5 of 8.0)

# 10x10ft Square Awning



Our professional-grade tents can mix and match frame and fabric quality, roof styles, colors, customizations, and more.

**Rely on your Product Expert or visit our quick links:**

[Mastertent Website](#)

[3D Tent Configurator](#)

[Tent Sizes](#)

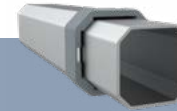
[Photo Gallery](#)

[Construction Details](#)

[Warranties & Certificates](#)

## Frame Specifications

**S1**



### Frame Construction

<b>Frame Material</b>	3x Strong, All-Aluminum (T606)
<b>Leg Shape &amp; Profile</b>	Octagonal Leg, 43mm (2.5mm)
<b>Truss Profile</b>	30x15mm (2.8mm)
<b>Connecting Elements</b>	✓ Aluminum with Rubber Caps
<b>Push-Button Locks</b>	✓ Comfort Press
<b>Corner Brackets</b>	✓ Spring Tension & Corner Clips

### Weight

91.3lbs. (41.5kg)

### Transport Bag

Heavy-Duty PVC with Window

## Customization Options

### Roof Styles



### Frame Colors

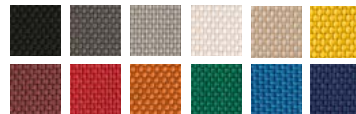


### Frame Height Extensions

✓ Up to 36"

### Peak Flag Capable

✓ Frame & Roof Integrated



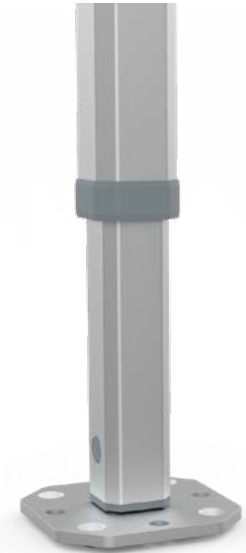
### Custom Printing

Individual Logo or Full Surface



### Roof Fabric Options

Pirontex®, Oxford Weave 500D Polyester, Heavy-Duty PVC, Fiberglass, Loden



## Textile Properties

### Pirontex®

### Oxford 500D

### Waterproof Rating

✓ 5x Industry Avg  
5,000mm Water Column

✓ 2x Industry Avg  
1,600mm Water Column

### Fire Rating Class

NFPA 701, CPAI-84 Sec.6, EN 13501-1:2019, CAN/ULC-S109, CA Title 19 Sec. 1237

### Color Fade Resistance

Extreme  
(blue scale 7.0-8.0 of 8.0)

Durable  
(blue scale 4.5-6.5 of 8.0)

# 15x10ft



## Frame Specifications

### Frame Construction

**Frame Material**  
**Leg Shape & Profile**  
**Truss Profile**  
**Connecting Elements**  
**Push-Button Locks**  
**Corner Brackets**

	S1 	S2 
<b>Weight</b>	92.4lbs. (42kg)	75.5lbs. (34.3kg)
<b>Transport Bag</b>	Heavy-Duty PVC with Window	Heavy-Duty PVC with Window

3x Strong, All-Aluminum (T606)  
 Octagonal Leg, 43mm (2.5mm)  
 30x15mm (2.8mm)  
 ✓ Aluminum with Rubber Caps  
 ✓ Comfort Press  
 ✓ Spring Tension & Corner Clips

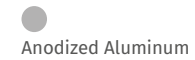
2x Strong, All-Aluminum (T606)  
 Octagonal Leg, 37mm (2.1mm)  
 28.5x15mm (2mm)  
 ✓ Aluminum with Rubber Caps  
 ✓ Comfort Press  
 ✓ Fixed Position & Corner Clips

## Customization Options

### Roof Styles



### Frame Colors



### Frame Height Extensions

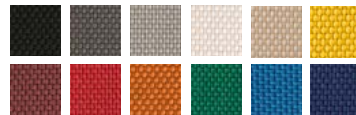
✓ Up to 36"

✓ Up to 12"

### Peak Flag & Banner Capable

✓ Frame & Roof Integrated

✓ Frame & Roof Integrated



**Custom Printing**  
 Individual Logo or Full Surface 

### Roof Fabric Options

Pirontex®, Oxford Weave 500D Polyester,  
 Heavy-Duty PVC, Fiberglass, Loden

### Textile Properties

#### Waterproof Rating

#### Pirontex®

✓ 5x Industry Avg  
 5,000mm Water Column

#### Oxford 500D

✓ 2x Industry Avg  
 1,600mm Water Column

#### Fire Rating Class

NFPA 701, CPAI-84 Sec.6, EN 13501-1:2019,  
 CAN/ULC-S109, CA Title 19 Sec. 1237

#### Color Fade Resistance

Extreme  
 (blue scale 7.0-8.0 of 8.0)

Durable  
 (blue scale 4.5-6.5 of 8.0)

Our professional-grade tents can mix and match frame and fabric quality, roof styles, colors, customizations, and more.

**Rely on your Product Expert or visit our quick links:**

[Mastertent Website](#)

[3D Tent Configurator](#)

[Tent Sizes](#)

[Photo Gallery](#)

[Construction Details](#)

[Warranties & Certificates](#)

# 20x10ft



## Frame Specifications

### Frame Construction

**Frame Material**  
**Leg Shape & Profile**  
**Truss Profile**  
**Connecting Elements**  
**Push-Button Locks**  
**Corner Brackets**

	S1 	S2 
<b>Weight</b>	123.6lbs. (56.2kg)	102.5lbs. (46.6kg)
<b>Transport Bag</b>	Heavy-Duty PVC with Window	Heavy-Duty PVC with Window

3x Strong, All-Aluminum (T606)  
 Octagonal Leg, 43mm (2.5mm)  
 30x15mm (2.8mm)  
 ✓ Aluminum with Rubber Caps  
 ✓ Comfort Press  
 ✓ Spring Tension & Corner Clips

2x Strong, All-Aluminum (T606)  
 Octagonal Leg, 37mm (2.1mm)  
 28.5x15mm (2mm)  
 ✓ Aluminum with Rubber Caps  
 ✓ Comfort Press  
 ✓ Fixed Position & Corner Clips

## Customization Options

### Roof Styles



### Frame Colors



200+ Custom RAL Colors



Anodized Aluminum

### Frame Height Extensions

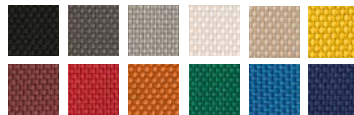
✓ Up to 36"

✓ Up to 12"

### Peak Flag & Banner Capable

✓ Frame & Roof Integrated

✓ Frame & Roof Integrated



### Custom Printing

Individual Logo or Full Surface



### Roof Fabric Options

Pirontex®, Oxford Weave 500D Polyester,  
 Heavy-Duty PVC, Fiberglass, Loden

### Textile Properties

#### Pirontex®

#### Oxford 500D

### Waterproof Rating

✓ 5x Industry Avg  
 5,000mm Water Column

✓ 2x Industry Avg  
 1,600mm Water Column

### Fire Rating Class

NFPA 701, CPAI-84 Sec.6, EN 13501-1:2019,  
 CAN/ULC-S109, CA Title 19 Sec. 1237

### Color Fade Resistance

Extreme  
 (blue scale 7.0-8.0 of 8.0)

Durable  
 (blue scale 4.5-6.5 of 8.0)

Our professional-grade tents can mix and match frame and fabric quality, roof styles, colors, customizations, and more.

**Rely on your Product Expert or visit our quick links:**

[Mastertent Website](#)

[3D Tent Configurator](#)

[Tent Sizes](#)

[Photo Gallery](#)

[Construction Details](#)

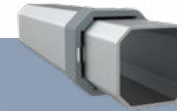
[Warranties & Certificates](#)

# 13x13ft



## Frame Specifications

**S1**



### Frame Construction

<b>Frame Material</b>	3x Strong, All-Aluminum (T606)
<b>Leg Shape &amp; Profile</b>	Octagonal Leg, 43mm (2.5mm)
<b>Truss Profile</b>	30x15mm (2.8mm)
<b>Connecting Elements</b>	✓ Aluminum with Rubber Caps
<b>Push-Button Locks</b>	✓ Comfort Press
<b>Corner Brackets</b>	✓ Spring Tension & Corner Clips

### Weight

90.9lbs. (41.3kg)

### Transport Bag

Heavy-Duty PVC with Window

## Customization Options

### Roof Styles



### Frame Colors

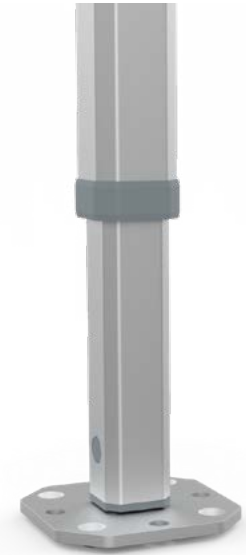


### Frame Height Extensions

✓ Up to 36"

### Peak Flag Capable

✓ Frame & Roof Integrated



Our professional-grade tents can mix and match frame and fabric quality, roof styles, colors, customizations, and more.

**Rely on your Product Expert or visit our quick links:**

[Mastertent Website](#)

[3D Tent Configurator](#)

[Tent Sizes](#)

[Photo Gallery](#)

[Construction Details](#)

[Warranties & Certificates](#)



### Custom Printing

Individual Logo or Full Surface



### Roof Fabric Options

Pirontex®, Oxford Weave 500D Polyester, Heavy-Duty PVC, Fiberglass, Loden

## Textile Properties

### Waterproof Rating

## Pirontex®

✓ 5x Industry Avg  
5,000mm Water Column

## Oxford 500D

✓ 2x Industry Avg  
1,600mm Water Column

### Fire Rating Class

NFPA 701, CPAI-84 Sec.6, EN 13501-1:2019, CAN/ULC-S109, CA Title 19 Sec. 1237

### Color Fade Resistance

Extreme  
(blue scale 7.0-8.0 of 8.0)

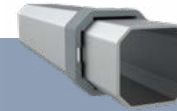
Durable  
(blue scale 4.5-6.5 of 8.0)

# 20x13ft



## Frame Specifications

**S1**



### Frame Construction

<b>Frame Material</b>	3x Strong, All-Aluminum (T606)
<b>Leg Shape &amp; Profile</b>	Octagonal Leg, 43mm (2.5mm)
<b>Truss Profile</b>	30x15mm (2.8mm)
<b>Connecting Elements</b>	✓ Aluminum with Rubber Caps
<b>Push-Button Locks</b>	✓ Comfort Press
<b>Corner Brackets</b>	✓ Spring Tension & Corner Clips

### Weight

117.5lbs. (53.4kg)

### Transport Bag

Heavy-Duty PVC with Window

## Customization Options

### Roof Styles



### Frame Colors

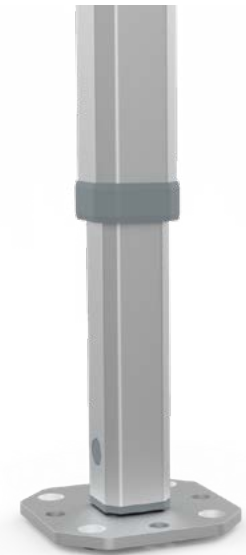


### Frame Height Extensions

✓ Up to 36"

### Peak Flag Capable

✓ Frame & Roof Integrated



Our professional-grade tents can mix and match frame and fabric quality, roof styles, colors, customizations, and more.

**Rely on your Product Expert or visit our quick links:**

[Mastertent Website](#)

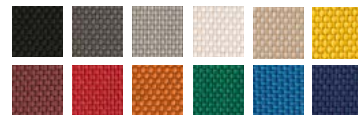
[3D Tent Configurator](#)

[Tent Sizes](#)

[Photo Gallery](#)

[Construction Details](#)

[Warranties & Certificates](#)



### Custom Printing

Individual Logo or Full Surface



### Roof Fabric Options

Pirontex®, Oxford Weave 500D Polyester, Heavy-Duty PVC, Fiberglass, Loden

## Textile Properties

### Pirontex®

### Oxford 500D

### Waterproof Rating

✓ 5x Industry Avg  
5,000mm Water Column

✓ 2x Industry Avg  
1,600mm Water Column

### Fire Rating Class

NFPA 701, CPAI-84 Sec.6, EN 13501-1:2019, CAN/ULC-S109, CA Title 19 Sec. 1237

### Color Fade Resistance

Extreme  
(blue scale 7.0-8.0 of 8.0)

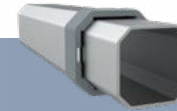
Durable  
(blue scale 4.5-6.5 of 8.0)

# 26x13ft



## Frame Specifications

**S1**



### Frame Construction

<b>Frame Material</b>	3x Strong, All-Aluminum (T606)
<b>Leg Shape &amp; Profile</b>	Octagonal Leg, 43mm (2.5mm)
<b>Truss Profile</b>	30x15mm (2.8mm)
<b>Connecting Elements</b>	✓ Aluminum with Rubber Caps
<b>Push-Button Locks</b>	✓ Comfort Press
<b>Corner Brackets</b>	✓ Spring Tension & Corner Clips

### Weight

156.9lbs. (71.3kg)

### Transport Bag

Heavy-Duty PVC with Window

## Customization Options

### Roof Styles



### Frame Colors

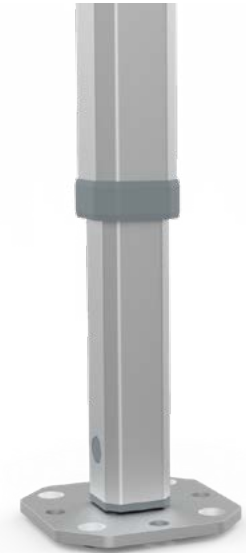


### Frame Height Extensions

✓ Up to 36"

### Peak Flag Capable

✓ Frame & Roof Integrated



Our professional-grade tents can mix and match frame and fabric quality, roof styles, colors, customizations, and more.

**Rely on your Product Expert or visit our quick links:**

[Mastertent Website](#)

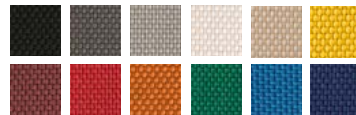
[3D Tent Configurator](#)

[Tent Sizes](#)

[Photo Gallery](#)

[Construction Details](#)

[Warranties & Certificates](#)



### Custom Printing

Individual Logo or Full Surface



### Roof Fabric Options

Pirontex®, Oxford Weave 500D Polyester, Heavy-Duty PVC, Fiberglass, Loden

## Textile Properties

### Waterproof Rating

## Pirontex®

✓ 5x Industry Avg  
5,000mm Water Column

## Oxford 500D

✓ 2x Industry Avg  
1,600mm Water Column

### Fire Rating Class

NFPA 701, CPAI-84 Sec.6, EN 13501-1:2019, CAN/ULC-S109, CA Title 19 Sec. 1237

### Color Fade Resistance

Extreme  
(blue scale 7.0-8.0 of 8.0)

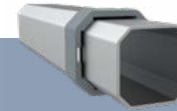
Durable  
(blue scale 4.5-6.5 of 8.0)

# 10x10ft Pagoda



## Frame Specifications

**S1**



### Frame Construction

<b>Frame Material</b>	3x Strong, All-Aluminum (T606)
<b>Leg Shape &amp; Profile</b>	Octagonal Leg, 43mm (2.5mm)
<b>Truss Profile</b>	30x15mm (2.8mm)
<b>Connecting Elements</b>	✓ Aluminum with Rubber Caps
<b>Push-Button Locks</b>	✓ Comfort Press
<b>Corner Brackets</b>	✓ Spring Tension & Corner Clips

### Weight

73.3lbs. (33.3kg)

### Transport Bag

Heavy-Duty PVC with Window

## Customization Options

### Roof Styles



### Frame Colors

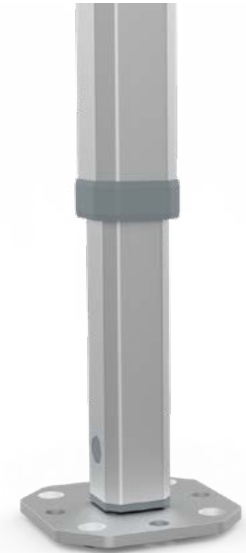


### Frame Height Extensions

✓ Up to 36"

### Peak Flag Capable

X



Our professional-grade tents can mix and match frame and fabric quality, roof styles, colors, customizations, and more.

**Rely on your Product Expert or visit our quick links:**

[Mastertent Website](#)

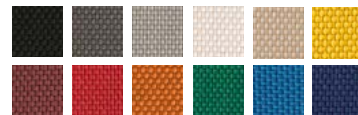
[3D Tent Configurator](#)

[Tent Sizes](#)

[Photo Gallery](#)

[Construction Details](#)

[Warranties & Certificates](#)



### Custom Printing

Individual Logo or Full Surface



### Roof Fabric Options

Pirontex®, Oxford Weave 500D Polyester, Heavy-Duty PVC, Fiberglass, Loden

## Textile Properties

### Pirontex®

### Oxford 500D

### Waterproof Rating

✓ 5x Industry Avg  
5,000mm Water Column

✓ 2x Industry Avg  
1,600mm Water Column

### Fire Rating Class

NFPA 701, CPAI-84 Sec.6, EN 13501-1:2019, CAN/ULC-S109, CA Title 19 Sec. 1237

### Color Fade Resistance

Extreme  
(blue scale 7.0-8.0 of 8.0)

Durable  
(blue scale 4.5-6.5 of 8.0)

# 13x13ft Pagoda



Our professional-grade tents can mix and match frame and fabric quality, roof styles, colors, customizations, and more.

**Rely on your Product Expert or visit our quick links:**

[Mastertent Website](#)

[3D Tent Configurator](#)

[Tent Sizes](#)

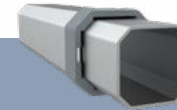
[Photo Gallery](#)

[Construction Details](#)

[Warranties & Certificates](#)

## Frame Specifications

**S1**



### Frame Construction

<b>Frame Material</b>	3x Strong, All-Aluminum (T606)
<b>Leg Shape &amp; Profile</b>	Octagonal Leg, 43mm (2.5mm)
<b>Truss Profile</b>	30x15mm (2.8mm)
<b>Connecting Elements</b>	✓ Aluminum with Rubber Caps
<b>Push-Button Locks</b>	✓ Comfort Press
<b>Corner Brackets</b>	✓ Spring Tension & Corner Clips

### Weight

92.2lbs. (41.9kg)

### Transport Bag

Heavy-Duty PVC with Window

## Customization Options

### Roof Styles



### Frame Colors

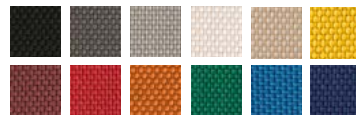


### Frame Height Extensions

✓ Up to 36"

### Peak Flag Capable

X



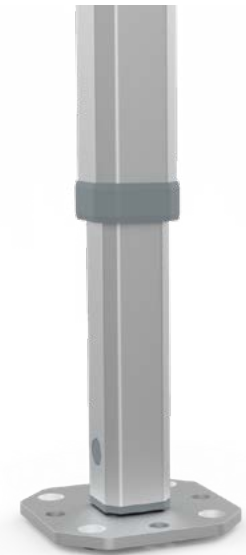
### Custom Printing

Individual Logo or Full Surface



### Roof Fabric Options

Pirontex®, Oxford Weave 500D Polyester, Heavy-Duty PVC, Fiberglass, Loden



## Textile Properties

### Pirontex®

### Oxford 500D

### Waterproof Rating

✓ 5x Industry Avg  
5,000mm Water Column

✓ 2x Industry Avg  
1,600mm Water Column

### Fire Rating Class

NFPA 701, CPAI-84 Sec.6, EN 13501-1:2019, CAN/ULC-S109, CA Title 19 Sec. 1237

### Color Fade Resistance

Extreme  
(blue scale 7.0-8.0 of 8.0)

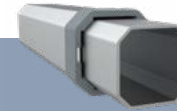
Durable  
(blue scale 4.5-6.5 of 8.0)

# 17x17ft Pagoda



## Frame Specifications

**S1**



### Frame Construction

<b>Frame Material</b>	3x Strong, All-Aluminum (T606)
<b>Leg Shape &amp; Profile</b>	Octagonal Leg, 43mm (2.5mm)
<b>Truss Profile</b>	30x15mm (2.8mm)
<b>Connecting Elements</b>	✓ Aluminum with Rubber Caps
<b>Push-Button Locks</b>	✓ Comfort Press
<b>Corner Brackets</b>	✓ Spring Tension & Corner Clips

### Weight

152.7lbs. (69.4kg)

### Transport Bag

Heavy-Duty PVC with Window

## Customization Options

### Roof Styles



### Frame Colors

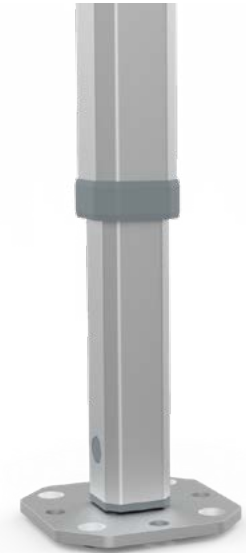


### Frame Height Extensions

✓ Up to 36"

### Peak Flag Capable

✓ Frame & Roof Integrated



Our professional-grade tents can mix and match frame and fabric quality, roof styles, colors, customizations, and more.

**Rely on your Product Expert or visit our quick links:**

[Mastertent Website](#)

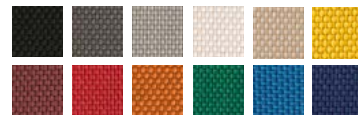
[3D Tent Configurator](#)

[Tent Sizes](#)

[Photo Gallery](#)

[Construction Details](#)

[Warranties & Certificates](#)



### Custom Printing

Individual Logo or Full Surface



### Roof Fabric Options

Pirontex®, Oxford Weave 500D Polyester, Heavy-Duty PVC, Fiberglass, Loden

## Textile Properties

### Pirontex®

### Oxford 500D

### Waterproof Rating

✓ 5x Industry Avg  
5,000mm Water Column

✓ 2x Industry Avg  
1,600mm Water Column

### Fire Rating Class

NFPA 701, CPAI-84 Sec.6, EN 13501-1:2019, CAN/ULC-S109, CA Title 19 Sec. 1237

### Color Fade Resistance

Extreme  
(blue scale 7.0-8.0 of 8.0)

Durable  
(blue scale 4.5-6.5 of 8.0)

Building up moments.

BRESSANONE

BRIXEN

Technical Data Sheets

# Awning Tents



# 10x10ft Awning Tents



## Frame Specifications

# S1

### Frame Construction

<b>Frame Material</b>	3x Strong, All-Aluminum (T606)
<b>Leg Shape &amp; Profile</b>	Octagonal Leg, 43mm (2.5mm)
<b>Truss Profile</b>	30x15mm (2.8mm)
<b>Connecting Elements</b>	✓ Aluminum with Rubber Caps
<b>Push-Button Locks</b>	✓ Comfort Press
<b>Corner Brackets</b>	✓ Spring Tension & Corner Clips

<b>Transport Bag</b>	Heavy-Duty PVC with Window
----------------------	----------------------------

Awning Model	Weight	Entrance Height	Peak Height	Awning Depth	Pack Size (L x W x H)
1-Awning	82.7lbs (37.6kg)	6' 8" (202cm)	11' 7" (353cm)	31.4" (80cm)	14 x 19 x 63"
2-Awning	86.5lbs (39.3kg)	6' 8" (202cm)	11' 7" (353cm)	31.4" (80cm)	19 x 19 x 63"
3-Awning	95.3lbs (43.3kg)	6' 8" (202cm)	11' 7" (353cm)	31.4" (80cm)	19 x 24 x 63"
4-Awning	87.3lbs (43.3kg)	6' 8" (202cm)	13' 6" (353cm)	31.4" (80cm)	24 x 24 x 63"



### Custom Printing

Individual Logo or Full Surface

### Roof Fabric Options

Pirontex®, Oxford Weave 500D Polyester, Heavy-Duty PVC, Fiberglass, Loden

## Customization Options

### Frame Colors



### Frame Height Extensions

✓ Up to 36"

### Peak Flag Capable

✓ Frame & Roof Integrated

## Textile Properties

### Waterproof Rating

✓ 5x Industry Avg  
5,000mm Water Column

✓ 2x Industry Avg  
1,600mm Water Column

### Fire Rating Class

NFPA 701, CPAI-84 Sec.6, EN 13501-1:2019, CAN/ULC-S109, CA Title 19 Sec. 1237

### Color Fade Resistance

Extreme  
(blue scale 7.0-8.0 of 8.0)

Durable  
(blue scale 4.5-6.5 of 8.0)

# 15x10ft Awning Tent Models



## Frame Specifications

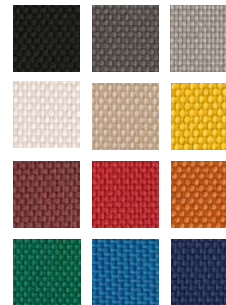
**S1**

### Frame Construction

<b>Frame Material</b>	3x Strong, All-Aluminum (T606)
<b>Leg Shape &amp; Profile</b>	Octagonal Leg, 43mm (2.5mm)
<b>Truss Profile</b>	30x15mm (2.8mm)
<b>Connecting Elements</b>	✓ Aluminum with Rubber Caps
<b>Push-Button Locks</b>	✓ Comfort Press
<b>Corner Brackets</b>	✓ Spring Tension & Corner Clips

<b>Transport Bag</b>	Heavy-Duty PVC with Window
----------------------	----------------------------

Awning Model	Weight	Entrance Height	Peak Height	Awning Depth	Pack Size (L x W x H)
1-Awning	105lbs (47.9kg)	6' 8" (202cm)	11' 7" (353cm)	31.4" (80cm)	20 x 19 x 63"
2-Awning	109.3lbs (49.7kg)	6' 8" (202cm)	11' 7" (353cm)	31.4" (80cm)	25 x 19 x 63"
3-Awning	116.8lbs (53.1kg)	6' 8" (202cm)	11' 7" (353cm)	31.4" (80cm)	30 x 19 x 63"
4-Awning	121lbs (55.1kg)	6' 8" (202cm)	11' 7" (353cm)	25.5" (65cm)	30 x 25 x 63"



**Custom Printing**  
Individual Logo or Full Surface

**Roof Fabric Options**  
Pirontex®, Oxford Weave 500D  
Polyester, Heavy-Duty PVC, Fiberglass, Loden

## Customization Options

### Frame Colors



### Frame Height Extensions

✓ Up to 36"

### Peak Flag Capable

✓ Frame & Roof Integrated

## Textile Properties

### Pirontex®

### Oxford 500D

### Waterproof Rating

✓ 5x Industry Avg  
5,000mm Water Column

✓ 2x Industry Avg  
1,600mm Water Column

### Fire Rating Class

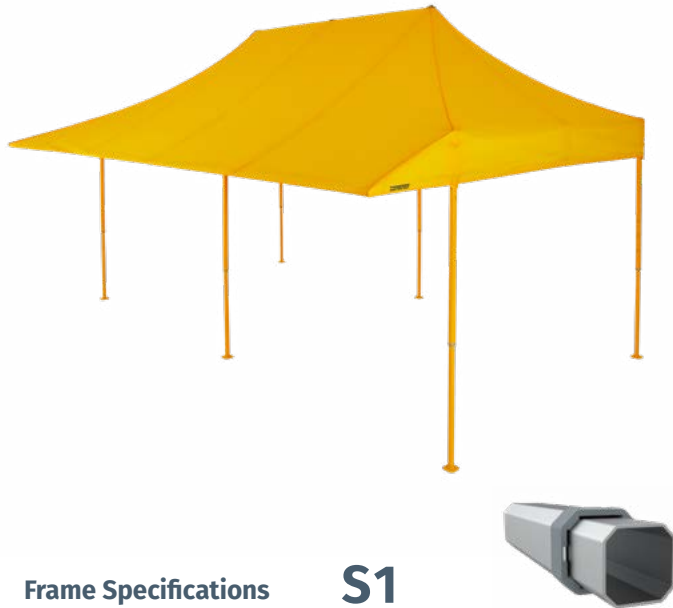
NFPA 701, CPAI-84 Sec.6, EN 13501-1:2019,  
CAN/ULC-S109, CA Title 19 Sec. 1237

### Color Fade Resistance

Extreme  
(blue scale 7.0-8.0 of 8.0)

Durable  
(blue scale 4.5-6.5 of 8.0)

# 20x10ft Awning Tent Models



## Frame Specifications

# S1

### Frame Construction

<b>Frame Material</b>	3x Strong, All-Aluminum (T606)
<b>Leg Shape &amp; Profile</b>	Octagonal Leg, 43mm (2.5mm)
<b>Truss Profile</b>	30x15mm (2.8mm)
<b>Connecting Elements</b>	✓ Aluminum with Rubber Caps
<b>Push-Button Locks</b>	✓ Comfort Press
<b>Corner Brackets</b>	✓ Spring Tension & Corner Clips

### Transport Bag

Heavy-Duty PVC with Window

Awning Model	Weight	Entrance Height	Peak Height	Awning Depth	Pack Size (L x W x H)
1-Awning	140.8lbs (64kg)	6' 8" (202cm)	11' 7" (353cm)	31.4" (80cm)	26 x 19 x 63"
2-Awning	144lbs (65.6kg)	6' 8" (202cm)	11' 7" (353cm)	31.4" (80cm)	31 x 19 x 63"
3-Awning	152.9lbs (69.5kg)	6' 8" (202cm)	11' 7" (353cm)	31.4" (80cm)	31 x 24 x 63"
4-Awning	159.5lbs (72.5kg)	6' 8" (202cm)	11' 7" (353cm)	25.5" (65cm)	36 x 29 x 63"



### Custom Printing

Individual Logo or Full Surface

### Roof Fabric Options

Pirontex®, Oxford Weave 500D  
Polyester, Heavy-Duty PVC,  
Fiberglass, Loden

## Customization Options

### Frame Colors



### Frame Height Extensions

✓ Up to 36"

### Peak Flag Capable

✓ Frame & Roof Integrated

## Textile Properties

### Pirontex®

### Oxford 500D

### Waterproof Rating

✓ 5x Industry Avg  
5,000mm Water Column

✓ 2x Industry Avg  
1,600mm Water Column

### Fire Rating Class

NFPA 701, CPAI-84 Sec.6, EN 13501-1:2019,  
CAN/ULC-S109, CA Title 19 Sec. 1237

### Color Fade Resistance

Extreme  
(blue scale 7.0-8.0 of 8.0)

Durable  
(blue scale 4.5-6.5 of 8.0)

# 13x13ft Awning Tent Models



## Frame Specifications

**S1**

### Frame Construction

<b>Frame Material</b>	3x Strong, All-Aluminum (T606)
<b>Leg Shape &amp; Profile</b>	Octagonal Leg, 43mm (2.5mm)
<b>Truss Profile</b>	30x15mm (2.8mm)
<b>Connecting Elements</b>	✓ Aluminum with Rubber Caps
<b>Push-Button Locks</b>	✓ Comfort Press
<b>Corner Brackets</b>	✓ Spring Tension & Corner Clips

<b>Transport Bag</b>	Heavy-Duty PVC with Window
----------------------	----------------------------

Awning Model	Weight	Entrance Height	Peak Height	Awning Depth	Pack Size (L x W x H)
1-Awning	106.9lbs (48.6kg)	7' 1" (216cm)	13' 6" (412.5cm)	31.4" (80cm)	14 x 19 x 80"
2-Awning	114lbs (51.8kg)	7' 1" (216cm)	13' 6" (412.5cm)	31.4" (80cm)	19 x 19 x 80"
3-Awning	121.4lbs (55.2kg)	7' 1" (216cm)	13' 6" (412.5cm)	31.4" (80cm)	24 x 19 x 80"
4-Awning	117.7lbs (53.5kg)	7' 1" (216cm)	13' 6" (412.5cm)	31.4" (80cm)	24 x 24 x 80"



### Custom Printing

Individual Logo or Full Surface

### Roof Fabric Options

Pirontex®, Oxford Weave 500D  
Polyester, Heavy-Duty PVC,  
Fiberglass, Loden

## Customization Options

### Frame Colors



200+ Custom RAL Colors

### Frame Height Extensions

✓ Up to 36"

### Peak Flag Capable

✓ Frame & Roof Integrated

## Textile Properties

### Pirontex®

### Oxford 500D

### Waterproof Rating

✓ 5x Industry Avg  
5,000mm Water Column

✓ 2x Industry Avg  
1,600mm Water Column

### Fire Rating Class

NFPA 701, CPAI-84 Sec.6, EN 13501-1:2019,  
CAN/ULC-S109, CA Title 19 Sec. 1237

### Color Fade Resistance

Extreme  
(blue scale 7.0-8.0 of 8.0)

Durable  
(blue scale 4.5-6.5 of 8.0)

# 20x13ft Awning Tent Models



## Frame Specifications

# S1

### Frame Construction

<b>Frame Material</b>	3x Strong, All-Aluminum (T606)
<b>Leg Shape &amp; Profile</b>	Octagonal Leg, 43mm (2.5mm)
<b>Truss Profile</b>	30x15mm (2.8mm)
<b>Connecting Elements</b>	✓ Aluminum with Rubber Caps
<b>Push-Button Locks</b>	✓ Comfort Press
<b>Corner Brackets</b>	✓ Spring Tension & Corner Clips

<b>Transport Bag</b>	Heavy-Duty PVC with Window
----------------------	----------------------------

Awning Model	Weight	Entrance Height	Peak Height	Awning Depth	Pack Size (L x W x H)
1-Awning	82.7lbs (37.6kg)	6' 8" (202cm)	11' 7" (353cm)	31.4" (80cm)	20 x 19 x 80"
2-Awning	86.5lbs (39.3kg)	6' 8" (202cm)	11' 7" (353cm)	31.4" (80cm)	25 x 19 x 80"
3-Awning	95.3lbs (43.3kg)	6' 8" (202cm)	11' 7" (353cm)	31.4" (80cm)	30 x 19 x 80"
4-Awning	87.3lbs (39.7kg)	6' 8" (202cm)	13' 6" (412.5cm)	31.4" (80cm)	20 x 24 x 80"



### Custom Printing

Individual Logo or Full Surface

### Roof Fabric Options

Pirontex®, Oxford Weave 500D  
Polyester, Heavy-Duty PVC, Fiberglass, Loden

## Customization Options

### Frame Colors



### Frame Height Extensions

✓ Up to 36"

### Peak Flag Capable

✓ Frame & Roof Integrated

## Textile Properties

### Waterproof Rating

✓ 5x Industry Avg  
5,000mm Water Column

✓ 2x Industry Avg  
1,600mm Water Column

### Fire Rating Class

NFPA 701, CPAI-84 Sec.6, EN 13501-1:2019,  
CAN/ULC-S109, CA Title 19 Sec. 1237

### Color Fade Resistance

Extreme  
(blue scale 7.0-8.0 of 8.0)

Durable  
(blue scale 4.5-6.5 of 8.0)

# 26x13ft Awning Tent Models



## Frame Specifications

# S1

### Frame Construction

<b>Frame Material</b>	3x Strong, All-Aluminum (T606)
<b>Leg Shape &amp; Profile</b>	Octagonal Leg, 43mm (2.5mm)
<b>Truss Profile</b>	30x15mm (2.8mm)
<b>Connecting Elements</b>	✓ Aluminum with Rubber Caps
<b>Push-Button Locks</b>	✓ Comfort Press
<b>Corner Brackets</b>	✓ Spring Tension & Corner Clips

<b>Transport Bag</b>	Heavy-Duty PVC with Window
----------------------	----------------------------

Awning Model	Weight	Entrance Height	Peak Height	Awning Depth	Pack Size (L x W x H)
1-Awning	82.7lbs (37.6kg)	6' 8" (202cm)	11' 7" (353cm)	31.4" (80cm)	26 x 19 x 80"
2-Awning	86.5lbs (39.3kg)	6' 8" (202cm)	11' 7" (353cm)	31.4" (80cm)	31 x 19 x 80"
3-Awning	95.3lbs (43.3kg)	6' 8" (202cm)	11' 7" (353cm)	31.4" (80cm)	36 x 24 x 80"
4-Awning	87.3lbs (39.7kg)	6' 8" (202cm)	13' 6" (412.5cm)	31.4" (80cm)	20 x 22 x 80"



### Custom Printing

Individual Logo or Full Surface

### Roof Fabric Options

Pirontex®, Oxford Weave 500D Polyester, Heavy-Duty PVC, Fiberglass, Loden

## Customization Options

### Frame Colors



200+ Custom RAL Colors

### Frame Height Extensions

✓ Up to 36"

### Peak Flag Capable

✓ Frame & Roof Integrated

### Textile Properties

#### Pirontex®

#### Oxford 500D

### Waterproof Rating

✓ 5x Industry Avg  
5,000mm Water Column

✓ 2x Industry Avg  
1,600mm Water Column

### Fire Rating Class

NFPA 701, CPAI-84 Sec.6, EN 13501-1:2019, CAN/ULC-S109, CA Title 19 Sec. 1237

### Color Fade Resistance

Extreme  
(blue scale 7.0-8.0 of 8.0)

Durable  
(blue scale 4.5-6.5 of 8.0)